



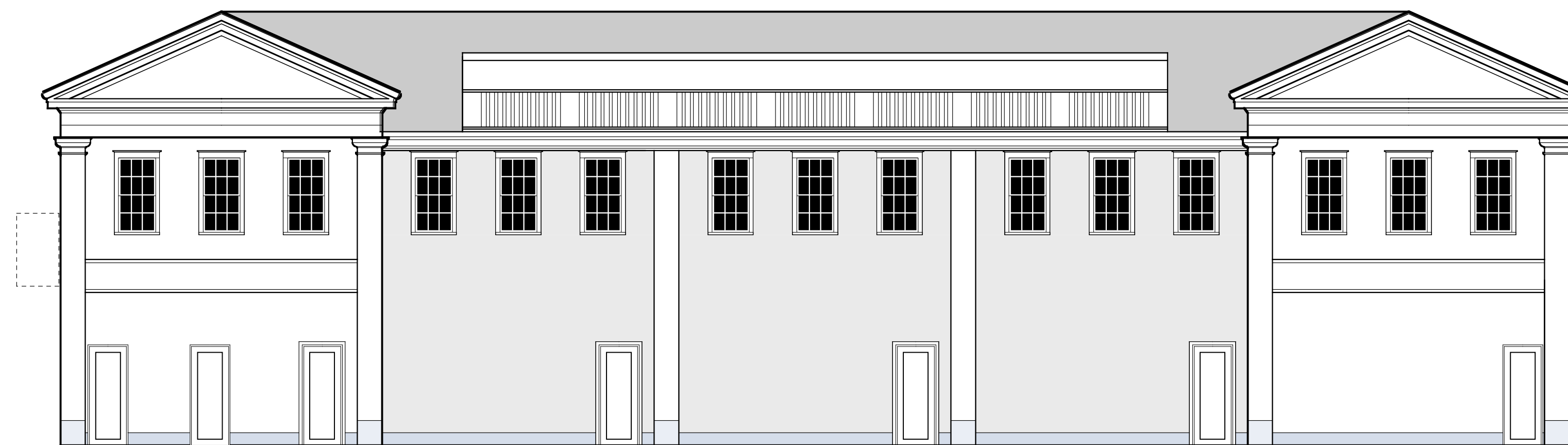
SOUTH ELEVATION



EAST ELEVATION



NORTH ELEVATION



WEST ELEVATION

T.O. ROOF
EL. 35'-0"

SECOND FLOOR
EL. 15'-0"

FIRST FLOOR
EL. 0'-0"

8 July, 2005

BUILDING 1 ELEVATIONS
SCALE: 1' = 1/8"

